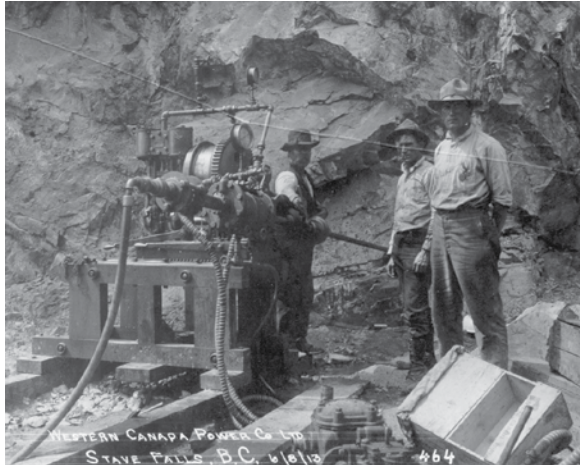


MAPLE RIDGE HISTORICAL SOCIETY

Newsletter January 2012

Photo: Maria Rantanen
Maple Ridge Times



HERITAGE WEEK ENERGY IN B.C.

To celebrate Heritage Week, which runs February 20-26, the Maple Ridge Museum will have three displays at the Maple Ridge library around this year's theme, Energy in BC: A Power Past, A Sustainable Future. We will be showcasing artifacts that reflect our local history of electrification, as well as discussing the various power producing resources in the community through photographs in the collection.

And don't forget to drop by the library during the month of February to see our displays.

For more information on Heritage Week you can visit <http://www.heritagebc.ca!>

HERITAGE AWARDS 2012

As part of our Heritage Week celebrations, the Community Heritage Commission will host an awards ceremony and get-together at St. Andrew's Heritage Hall on Wednesday, February 22, at 7 pm. Join us in celebrating this year's recipients. Refreshments will be provided.



MEETING JANUARY 26

Daryl Birtch of the Dewdney-Alouette Railway Society will be presenting our January 26th program. He has created a PowerPoint presentation showing how to create an accurate scale model for their Port Haney diorama. Many of these buildings no longer exist except in photograph. He will focus on some recently acquired photos of Simister's Bakery, which stood next door to the pool hall on 8th Avenue [now 224th Street]. Pictures on page 4! Daryl even has a way of discovering paint colours from a black and white photo. This program will begin at 7:30 pm in our usual meeting place, St. Andrew's Heritage Hall at 22279 116th Avenue.

If you haven't visited the railway diorama on the lower floor of the Maple Ridge Museum recently, you will be surprised by all the new additions and refinements to the scale model of waterfront Maple Ridge. Railroaders will be on hand for their monthly open house on Sunday, January 29th, from 1:00 to 4:00 pm.

COMING IN FEBRUARY!

Don Waite will join us on February 23 to tell us about his work preparing his next illustrated book, this one on the quest for gold in Western Canada.

He will regale us with stories of those early gold-diggers – how they found the elusive nuggets and how they managed to get heavy ore to a smelter. He will illustrate it all with the incredible and never-before-seen photographs we've come to expect from Don. The presentation should be a real treat!





Another gem from the Bill Saunders Estate. A dramatic shot of a group of children surveying the smoking ruins of Maple Ridge High School in June of 1953.

START SEARCHING FOR FAMILY HISTORY

Brenda Smith will be offering her popular “Start Searching” course on how to get started on your family history projects and then how to organize all the wonderful materials you find.

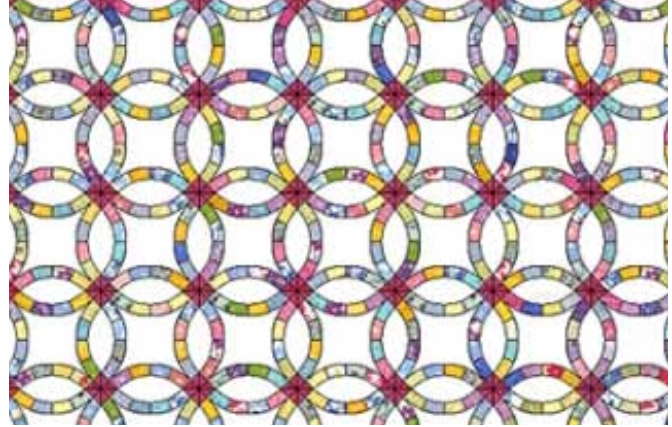
The course will run every other Sunday from January 22 to March 18 from 1 to 4 p.m. at the Maple Ridge Library.

The cost is \$100 and enrolment is limited, so if you are interested, don't wait and call the museum at 604-463-5311 to register.

BC HISTORICAL FEDERATION

The BC Historical Federation, of which we are a member, is an umbrella group for historical societies and individual historians around the province.

They publish a quarterly journal and a newsletter – the newsletters are available on their website at www.bchistory.ca and the journal can be purchased by subscription. Our members **Andrea Lister** and **Brenda Smith** are very involved with the Federation – Brenda is their education director and Andrea edits the journal.



Women of the hospital auxiliary working on a double wedding ring quilt in a frame. A double wedding ring pattern to the right. Quilting was one of the early forms of “thrift” or re-cycling.

GOING GREEN



Starting on the 1st of February the Maple Ridge Museum and the Ridge Meadows Recycling Society will jointly present an exhibition chronicling artifacts from “thrift” to modern day “up-cycling.” The displays will show various re-purposed tools, extending what the term recycling really means.

The exhibit will also display the history of the Ridge Meadows Recycling Society through various artifacts and photographs.

The exhibition at our “temporary” gallery will run until the end of April.

It is our hope to have a spring “open house” on Earth Day, Sunday April 22nd, and we’ll let you know more about that in the coming months.

HERITAGE TEA COMMITTEE VOLUNTEERS!

This year marks the 20th Anniversary of the Heritage Tea, which will take place on Saturday, April 14th, at the Seniors Centre.

! The committee is looking for a few volunteers to replace those who are unable to assist in planning this year.

If you’d like to be a part of the committee, or help out on the day of the tea please contact Allison at 604-463-5311.

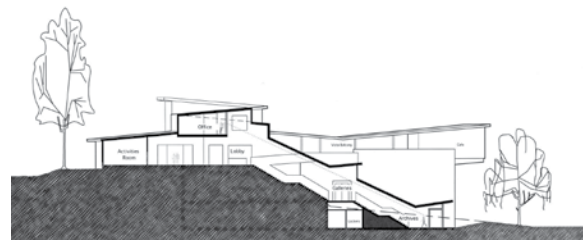
AGM & POTLUCK

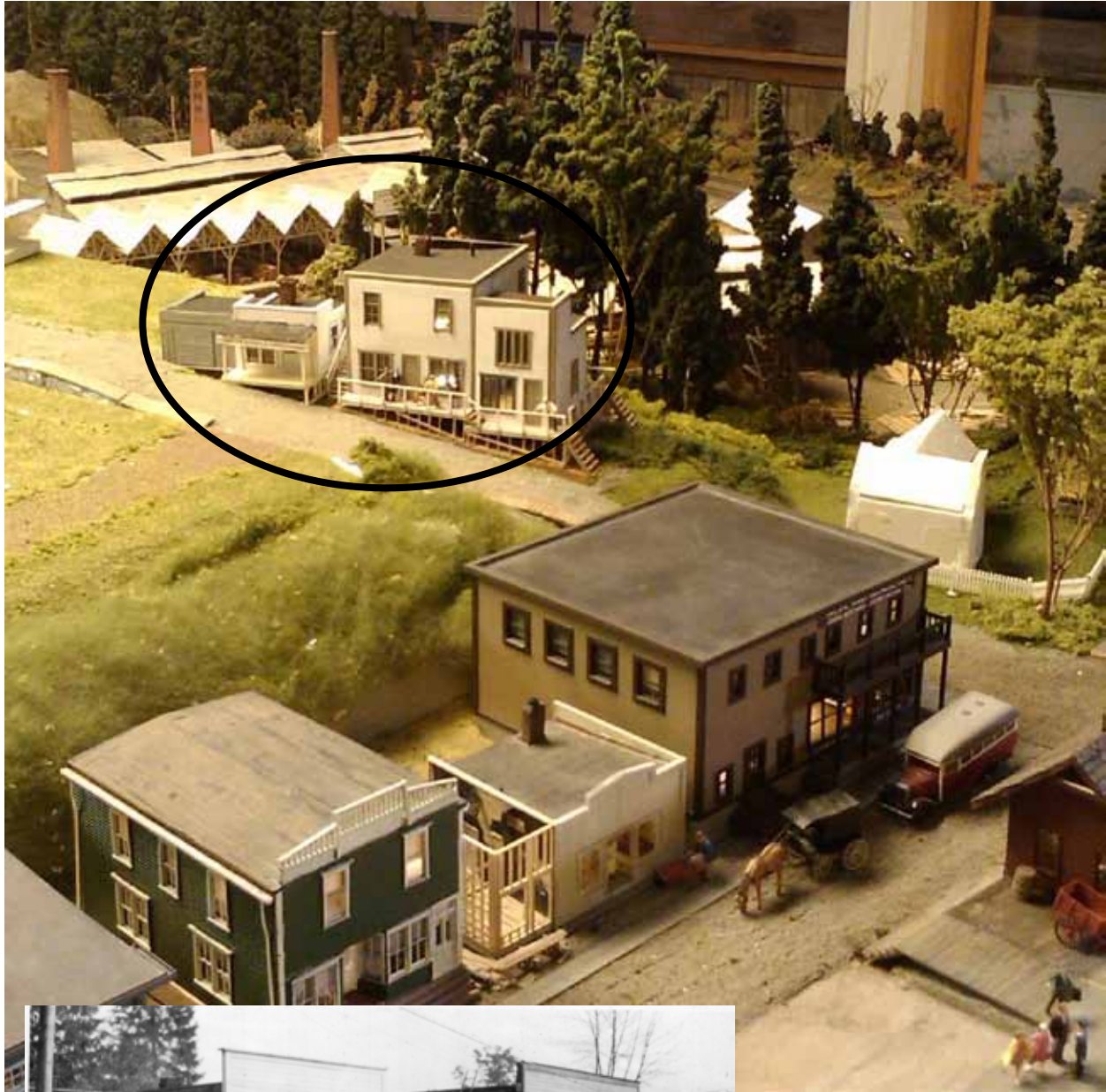
The Maple Ridge Historical Society will hold its annual general meeting and potluck supper on March 22 at St Andrew’s Heritage Hall. We’ll gather at 6pm for our meal and follow it up with our meeting. That is also when we renew our board of directors for the coming year so please consider stepping up to a board position and find out how we maintain our operations and work towards our dreams.

MEMBERSHIP REMINDER

If you have not yet paid this year’s membership, please do so and encourage your friends to join us as well. It’s not just the money – we need the strength of numbers as we continue to press for a new museum building.

The need for a new museum and archives becomes more critical with each passing year. We are effectively out of space and none of our off-site storage attempts has produced the kind of space we need the most – secure and reasonably climate-controlled. We really do need the support of the community if we are to continue preserving and protecting our community history.





Simister's bakery, next to the pool hall on what is now 224th Street, has been revived in the D.A.R.S diorama.

Daryl Birtch will show how it is all done at our meeting on January 26th.

DEWDNEY-ALOUETTE



Visit the Dewdney-Alouette Railway Society's diorama in the museum.

On the last Sunday of every month, members of the Dewdney-Alouette Railway Society are present to "talk trains" and operate the Diorama. Model Railroaders are welcome on the Tuesday and Thursday evenings before the last Sunday of the month.

Info: Dick Sutcliffe at 604-467-4301 or E-Mail: ras1@uniserve.com

