



MOTHER'S DAY TEA AT HANEY HOUSE MUSEUM

Sunday, May 11th

11:00am – 3:00pm

11612 224th Street, Maple Ridge, BC

\$6 per person

Join us for tea and treats on the veranda of Haney House Museum for our annual Mother's Day Tea. There will also be guided tours of the house, and our temporary exhibit, "Mother Knows Best", which will be focusing on women's jobs both domestically and in the workforce, and how the roles have changed over the last century.

Please contact Allison at 604-463-5311 for more details, or to book a reservation or e-mail: mrmuseum@gmail.com

Visit mapleridgemuseum.org for more details.

AUGUST 10!

SAVE THE DATE TO CELEBRATE!

Community: Past, Present & Future.

Join us August 10, 2014, from 11:00 am to 4:00 pm in Jim Hadkiss Park to celebrate the 40th anniversary of the Maple Ridge Museum.

The event is still in the planning stages but activities include:

- Free admission to the museum.
- Live performance by Tiller's Folly — this award-winning ensemble is the Pacific Northwest's Canadian Celtic group-turned historians.
- Performance by the Sionnaine Irish Dance Academy.
- Book launch of *Looking Back at Maple Ridge: Volume One*, a compilation of the articles written by Sheila Nickols in the 1980s and 1990s.
- Family fun.
- And much more...

Do you have skills or talents that could help out? Or maybe you are just interested in promoting our history?

Then we need you!

Every successful community event needs volunteers. If you have some time and skills and are interested in helping put on a great event then contact us and let us know what you can do.

Please email the Historical Society Board at [<mrmuseum@gmail.com>](mailto:mrmuseum@gmail.com)

Look for more details in coming newsletters, on the museum website and in the local newspapers.



Having just celebrated the 21st Annual Heritage Tea, it got us thinking back to the first, in 1993, which was supposed to be a one-time affair.

We had the first Heritage Tea at the modern St. Andrew's United Church, now Golden Ears United.

In this photo, we see a group of our volunteers from that first Tea arranged in front of it. From left, Isabel Kent, Rona Kellaway, Beryl Cunningham, Susan Crape, Susan's cousin, Sheila Nickols, and Alice Clayton.



Sandwich ladies – Our kitchen crew kept us well supplied with sandwiches and other goodies




Cake cutting – Curator Allison White wields the knife while Sheila Nickols and Dick Middleton supervise.

HERITAGE TEA 2014

On Saturday, April 5th MRHS hosted our annual Heritage Tea at the Seniors' Centre. Attendance was at a record low: 124 people attended this year. However, due to the fact that we have raised the price of admission to \$10 we did not go over the projected budget.

A huge thanks to our community sponsors this year. Thrifty Foods supplied us with gorgeous rose plants as centre pieces for the tables, and Save-On Foods and the Europe Bakery gave a discount off our orders with them. Without these donations we would not have been able to keep our other costs down.

Also, many thanks to the committee members and especially the volunteers who helped on the day: you helped make the event run smoothly!



FLICKR RESOURCES

We've added greatly to our community archives resources on the Flickr website.

Matthew Shields has added 22 new sets of photos in recent months to bring the total to 38 topical sets with something for everyone.

We have an average of 4,000 to 8,000 "hits" or looks per day, which shows how much they're being used. Search for "Maple Ridge Community Archives" and you'll find us.

Due to the area plan being created for Hammond, a great many new images have been added to that photo set so if you haven't check in a while, it's time for a revisit.

Let us know what you think and tell us if you have topics you'd particularly like to see. You can leave a comment on the site or contact us at mrmuseum@gmail.com.

AGM ON MARCH 20

We had a good turnout on March 20th for our AGM and potluck supper. A good time was had by all. We also took care of business and dealt with the annual report and election of officers.

Returning to the board for the next year are: Sheila Nickols, Dick Sutcliffe, Mike Davies, Darren Durupt, Erica Williams, Julie Koehn, Wendy Cook and Faye Isaac.


Positions and committee membership will be determined at the April board meeting.

Please remember that if you would like to get more involved in the society, you can join the board any time in the year and can join a committee without being on the board. Contact Val at 604-463-5311 for more information.

THE CITY OF MAPLE RIDGE



Mayor Betty Dube and her council being sworn in during January of 1974. All participants are in Victorian costume in honour of the district centenary. This year, we will be helping the newly minted City of Maple Ridge celebrate it's 140th Birthday.



Canada's
Historic Places

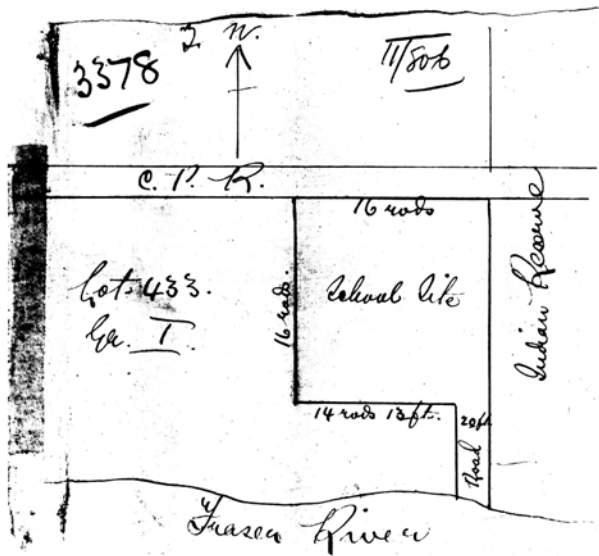
Maple Ridge's heritage is not only recognized by our Municipal government—a good dozen of our historic places are also registered and recognized by Federal and Provincial governments. To find out more about Maple Ridge's registered places and other jewels all over Canada visit Canada's Historic Places Web site <historicplaces.ca>

1875	Maple Ridge School ("The Ridge")	
1885	Stave River School (Whonnock)	
1888	Haney School	
1893		Glen Valley & Silverdale
1895	South Lillooet	
1896	Websters Corners	
1897	Stave River School (Ruskin Mill)	
1899	Hammond	

THE FIRST SCHOOL opened in Maple Ridge after the the incorporation of Maple Ridge in 1874 was the one on the Fraser at the foot of Laity Street.

James William Sinclair was Maple Ridge's first public school teacher. He is shown in the photo below with his wife, Annie Isabel Irving. The photo was probably taken at the time of their wedding in 1882.

There was some confusion about the opening of the second school in Maple Ridge. We now know that it was the Whonnock school that opened in 1885. The school carried the name Stave River school until the 1892-1893 school year.



Surveyors sketch map of land donated by Robert Robertson in 1884 for the building of the school in Whonnock. Note the leg to the Fraser to accommodate children coming across the river from what was later known as Glen Valley. One "rod" is very close to five meters. The area was about 1.5 acres.



DEWDNEY-ALOUETTE



Visit the Dewdney-Alouette Railway Society's diorama in the museum.

On the last Sunday of every month, members of the Dewdney-Alouette Railway Society are present to "talk trains" and operate the Diorama. Model Railroaders are welcome on the Tuesday and Thursday evenings before the last Sunday of the month.

Info: Dick Sutcliffe at 604-467-4301 or E-Mail: ras1@uniserve.com

