



MAPLE RIDGE HISTORICAL SOCIETY

Newsletter April 2010

WAR BRIDES APRIL 22ND PROGRAM

ON OUR APRIL 22ND meeting **Annette Fulford** will be presenting a program on war brides. Her grandmother Grace Clark was a war bride from the First World War. In September of 1919 Grace and her new husband Hugh Clark sailed to Quebec aboard the *Melita*, along with 1100 other brides—some with children.

Annette could not find much research material on war brides, so she began collecting information and created a Web site to promote and preserve the history of the war brides of the First World War.

The results of her research will form the illustrated talk, featuring a handwritten diary or letter that Grace wrote during her voyage to a new country and a new life.

The program begins at 7:30 pm on April 22 in the usual meeting place, St. Andrew's Heritage Church, 22279 116th Avenue. *sn*



Grace and Hugh Clark on their wedding day.

<http://ww1warbrides.blogspot.com/>

THE NEW BOARD OF THE MAPLE RIDGE HISTORICAL SOCIETY

Janet Amsden	Vice President
Wendy Cook	Secretary
Mike Davies	Treasurer
Mary Froc	Director
Faye Isaac	President
Steve Kellas	Director
Sheila Nickols	Past-President
Carla Reed	Director
Pat Rorick	Director
Dick Sutcliffe	Director
Katherine Wagner	Director
Erica Williams	Director

MUSEUM REPORT

THE MUSEUM has hopped into spring with display presentations for the Chamber's 100th Anniversary celebration and the Heritage Tea, as well as the new photography display in the parlour room.

Haney House is limping a bit as the furnace has passed on and needs replacing. We hope to have it done soon but will have to stay closed until then.

We have learned that the province has reinstated some of the gaming funds for arts and culture and as a museum, we qualify to apply. Keep your fingers crossed for us as we have sorely missed that funding this year. Too many of our programs are languishing on hold while we are so short-staffed. *vp*

HERITAGE DAY REUNION IDEA



DO YOU BELONG to a group or club with deep roots in Maple Ridge? Are you considering a reunion? How about Heritage Day? Heritage Day

each year is on the Saturday of the BC Day long weekend—this year on July 31. We can offer you a place to gather and participate in our publicity and a day filled with entertainment and activities for all ages.

We want to make the BC Day celebration a weekend of reunions—school classes, clubs, organizations, and families. If you or your group are interested call the museum at 604-463-5311. *vp*



HERITAGE TEA 2010

THE 18TH ANNUAL HERITAGE TEA took place Saturday, April 10th at the Senior's Centre, and we had 179 visitors which is down substantially from last year's 257. Everyone who attended enthusiastically enjoyed the displays and seeing old friends along with the sandwiches and treats that were so graciously prepared by the many volunteers who made the day possible.

On behalf of the Program Committee for the MRHS we would like to thank all those who attended and the volunteers who donated their time and baked goods.

The dropping attendance is a concern and the committee would welcome any suggestions on how to attract a larger crowd to this valuable annual event. *aw*



MOTHER'S DAY TEA AT HANEY HOUSE - SUNDAY, MAY 9TH

11:00 am – 3:00 pm | Admission \$6.00
11612 224th Street

MOTHER'S DAY is just around the corner, and what better way to celebrate than with tea and treats served on the veranda at Haney House!

This year along with guided tours of the house, the Ridge Meadows Quilters' Guild will be showcasing their quilts and doing demonstrations inside the house. If you want to learn some new techniques, or just soak up the craftsmanship, be sure to join us Sunday, May 9th.

Space is limited depending on weather conditions, so please contact Allison at 604-463-5311 or <mrmcurator@uniserve.com> to reserve a table. *aw*





The Popular "LADY ALEXANDRA" Arriving at Bowen Island.

The legendary Union Steam Ship Company (USSCo.) was born in the days of the Klondike and operated up and down the BC coast between 1889 and 1959. *Lady Alexandra*, the flagship of USSCo., was built around 1923.

MEMBER NOTE

BOWEN ISLAND MUSEUM

LOOKING for something to do on a sunny, summer day? Hop on a ferry in Horseshoe Bay and 15 minutes later you're in Snug Cove on Bowen Island, and five minutes' walk from the Bowen Community Museum and Archives. Even tinier than the Maple Ridge Museum, this one won't take long to go through, but the changing exhibits are always interesting.

Last summer it was "The History of the Western Explosives Factory on Bowen Island"; how many people know that dynamite was manufactured on the far side of this idyllic island a century ago – or of the inevitable tragic deaths that followed accidental explosions?

This summer the exhibition, opening in May, will feature "Microclimates, Gardening and Architecture on Bowen Island" – a look at how, over time, islanders have adapted to their environment. The "3D" challenge on the island – Deer, Drought and Dearth of soil.....and yes, it is a Gulf Island and therefore often bone dry in summer.

The museum isn't the only historical venue. Close by are the Union Steamship cottages of the early 20th century, when the island was a destination resort for day trippers and vacationers; the General Store, now the library, is another heritage building, as is "The Old Dorm", where the hotel

and store staff (myself included!) stayed for the summer in the 1950's.

During the summer a usual high-light for the Bowen Island Historians is the "High Tea" with live music, and the popular "Antiques Appraisal" when, for a fee, people bring their treasures to be evaluated by an expert.

To visit Bowen Island, check the B.C. Ferries web-site for schedules. If you can park your car at Horseshoe Bay, there is no need for one on the island; the walk-on fare is minimal, and seniors travel free Mon.-Thurs.!

—Carla Reed

B.C.'s First All-Number Dial Exchange for Whonnock Sub

B.C. Telephone Co.'s first all-number dial exchange went into operation in the Fraser Valley early Sunday, with the opening of an \$36,000 system at Whonnock, six miles east of Haney.

Instead of an exchange name prefix, all Whonnock numbers begin with 462, followed by four other digits. Initially, the new system ... will serve 120 subscribers who were part of Haney's Ingersoll exchange and 30 applicants in Whonnock. About 70 applicants in Stave Gardens will receive service when additional equipment now on order is installed next year.

Those in the new exchange have free calling with Haney and Hammond, all Whonnock numbers being contained in a supplementary directory mailed to subscribers in all three areas.

B.C. Telephone Co. official said the all-number system will be gradually be extended to include exchanges scheduled for conversion to manual operation during the next few years. The system is being adopted generally throughout North America mainly because of the need for more dialing codes under the international direct distance dialing program.

Gazette 28 July 1960

PROFILE: CARLA REED

WHEN I ARRIVE for my interview, Carla Reed is just putting the finishing touches to a substantial lentil soup that will slowly continue to simmer for a few hours, until it will make Carla's evening meal for the next few days. "It'll be sooo good and nutritious," she says. This is typical of Carla: she is practical and wants to minimize effort, but not at the expense of quality. For two years (her husband died three years ago) she has lived in a new condominium complex in the centre of Haney—close to everything, but from her ground-floor apartment she also has immediate access into nature, and when she cranes her neck she can even see the creek.

Carla has a colourful and varied life behind her. She was born in Shanghai to an English mother and a German father, whose family had lived in China already for three generations. Carla's great-grandparents came out "with the first flow of Germans" in the late 1800s. When her great-grandfather died, the widow decided to stay and opened a boarding house to support herself and her four daughters. Carla's father had an import/export business but later, during the Second World War, traded in stocks. After the war and after the Japanese occupation was over, Carla first went to a German school, and after it was closed, to an American school, where her mother was secretary. In 1947 her father was repatriated to Germany, spending the next two years in a camp. Carla and her mother meanwhile stayed in England until the family was reunited in 1949. The next step was immigration to Vancouver, Canada. High school here for Carla was followed by two years at Pomona College in the Los Angeles area, which her father considered a good place to start her academic education. Carla finished her studies in Vancouver at

UBC with a major in history.

In 1961 Carla married Len, who was soon sent to Prince Rupert for his employer, Marconi. The Reeds lived there from 1962 to 1964, and Carla loved it. In the small town of 12,000 or so she met lots of people and participated in many community events. Two of her children spent their first childhood years there.

In the 1970s Carla and her husband moved to Bradner, to a 10-acre hobby farm. Len continued to commute to Vancouver for work and farmed on weekends. Both Carla and Len had no agricultural experience, and some crises during the early times now make her laugh. Much of their knowledge was gleaned from library books, as for instance the subject of how to raise cattle. Right away the Reeds bought four cows, but when they brought them home, these animals, coming straight from the Interior of BC, completely ignored any fences and marched off. Eventually they were spotted on a neighbour's property. What to do next? Of course they had to be caught, with a lasso. "Len practised on me in the dining room," Carla recalls. He did manage to get his lasso around one of the cows but then didn't think about the fact that he wasn't on a horse, so the cow took off into a thicket, dragging the lasso with her. Fortunately Len had let go by this time.



Another time, when Carla and Len were entertaining dinner guests, Carla remembered something that had to be done in the barn. She dashed over, completed the task, and turned to go back to her guests. But meanwhile Freddy, the bull that was on loan for the cows, had wandered into the barn and cornered Carla in a narrow stall. This was an anxious moment—there was nothing between her and Freddy’s horns, and nowhere to escape. “Luckily,” Carla says, “he was a friendly guy, and I managed to sidle past him without being gored.” Later the calves had to be delivered, of course, which was among Len’s chores.

After some ten years the Reeds sold their cattle and started a nursery, but eventually this became too much work and wasn’t exactly profitable. So they moved again, this time to a five-acre property (which was not a farm) on the flanks of Sumas Mountain. And five years ago they came to Maple Ridge, where their third daughter lives with two children. The other two daughters live in Toronto and Calgary.

Carla likes Maple Ridge and with volunteering at Haney House and at the Museum and serving on the MRHS Board has found meaningful volunteer activity. She has also volunteered at Katie’s Place, from where she obtained O’Malley, the cat that lives with her in the apartment now. Some of Carla’s time is also spent at her holiday home on Bowen Island, and travel fills whatever time is left. Recently she went to Cuba—“heritage Cuba,” she calls the focus of her trip, and she wanted to see how a Communist country works. She has also been to the Galapagos Islands and did a river trip from St. Petersburg to Moscow. Upcoming plans include the Arctic in July and Peru and Ecuador in November.

Is there room for any more projects or involvement left in Carla’s life? Yes, there is. Recently she made a sizeable contribution to the Nature Conservancy Fund to help assuring the future of a forestry plot in the Nelson area. “This is something I find important,” she says, “and I’m fortunate that I can do it.”

—Helmi Braches



A STATION FOR ONE DAY ?

THIS THREE-STORY BUILDING stood once in Ruskin where the Stave River meets the Fraser. It housed the office of Heaps sawmill, their store, the Ruskin post office and also acted as a boarding house for sawmill employees.

Photographs of the Heaps & Co. building are well known but none shows that intriguing tiny railway station up front as in this 1909 photo. The construction of the first Ruskin rail station was only approved in the following year. It was quite different from this one, and placed away from the Heaps building. Was this a photographer’s trick?

The answer is surprisingly simple. The photograph shows the date “September 1st 1909,” which was when Governor Earl Grey visited the power plant at the Stave Falls, then still under construction. In the *Victoria Colonist* we read that His Excellency travelled from Vancouver to Ruskin in a chartered train taking about 50 minutes to reach Ruskin. Here carriages were provided for His Excellency’s and all those travelling with him for the six-mile drive to the construction site.

On his way up the Governor General cut the ribbon to open the newly constructed bridge, the “Red Bridge,” crossing the Stave River where now the Ruskin dam is. Here, on the return drive, a group of young ladies here gave the visitors the pleasure of hearing them sing “The Maple Leaf Forever.” All along the route “...between the railway station [!] and the falls British flags were flying.” So did the flags at the Heaps & Co. building as the photograph shows.

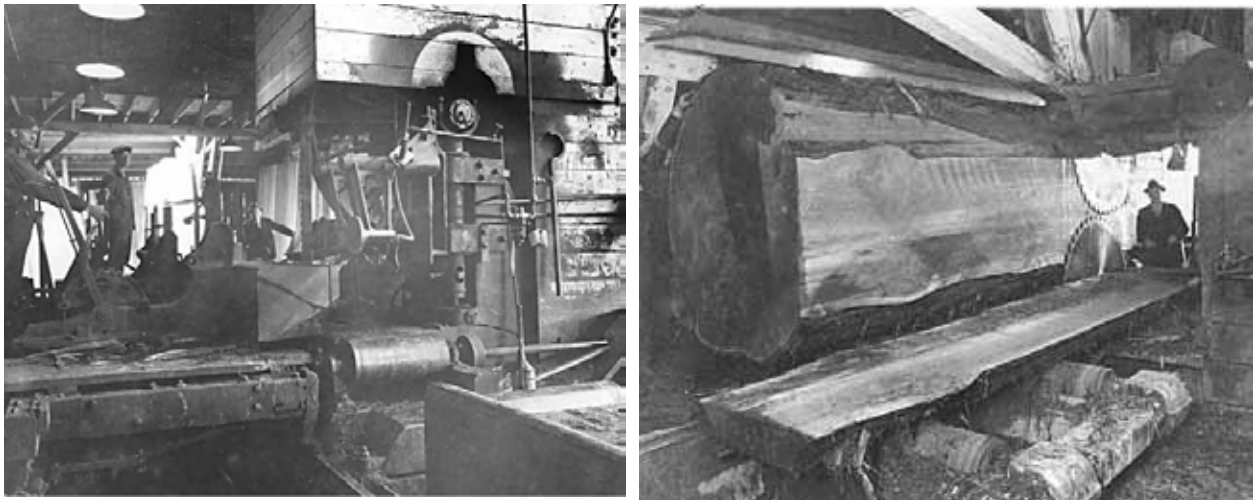
Apparently the little railway station was put there just to accommodate Governor General Earl Grey on his visit to the works at the Stave Falls. *fb*

HAMMOND MILL CENTENNIAL REUNION MAY 29

Hammond Cedar Mill has been in operation in a variety of configurations and under the direction of a long series of owners since 1910. A reunion of all former staff and any other interested parties will be held at Meadow Gardens Golf Course on the evening of May 29. For \$30 per ticket, you'll get a fine meal, Hammond and mill history, and a room full of Hammond old-timers. To purchase tickets, go to the sales office at Hammond Cedar. For more information, call **John Ambrosio** at 604-463-4051. *vp*



Photographer Leonard Frank took the two pictures of the inside of the Hammond mill in 1926, probably at the same time when he took this picture of the outside. The men posing on the office steps have not yet been identified.



DEWDNEY-ALOUETTE



Visit the Dewdney-Alouette Railway Society's diorama in the museum.

On the last Sunday of every month, members of the Dewdney-Alouette Railway Society are present to "talk trains" and operate the Diorama. Model Railroaders are welcome on the Tuesday and Thursday evenings before the last Sunday of the month.

Info: Dick Sutcliffe at 604-467-4301 or E-Mail: ras1@uniserve.com

